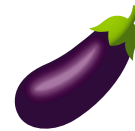




Surveillance Update

Virginia (and surrounds), SA
5-11 May 2022

Legend:
Light green = Very low incidence
Green = Low incidence
Yellow = Low-moderate incidence
Orange = Moderate incidence
Red = High incidence



Botrytis	Orange	Orange*	Orange*	Red	
Downy mildew	Red				
White blister					Green
Fusarium	Orange				
Gummy stem blight	Green				
Powdery mildew	Red	Red	Red*		
Aphids	Green*	Green	Yellow*	Green	
Mites	Orange*	Green*	Orange*	Orange	
Thrips	Yellow*	Green*	Red*	Red	
Whitefly	Orange*	Red*	Green*	Red	

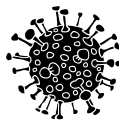
Crops in order of appearance: Cucumber, Tomato, Capsicum, Eggplant, Asian greens.

* Multiple contributors

What's in the crop?



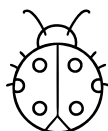
Aphids: Reports of lower aphid levels this week.



Botrytis: Slight increase in cucumber, while remaining the same across tomato, capsicum and eggplant.

Downy mildew: Increase from low incidence to high incidence in cucumbers.

Powdery mildew: Continued high incidence of powdery mildew reported this week.



Beneficials:
Nesidiocoris reported this week.

CASE STUDY: **Brown marmorated stink bug** (*Halyomorpha halys*) - Not present in Australia

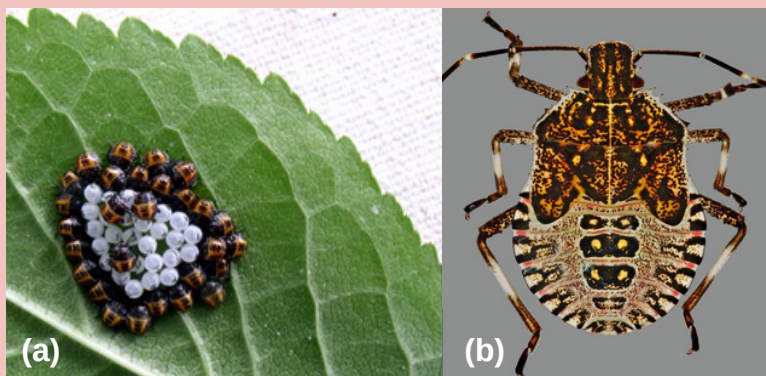
- 1 Significant threat to all of Australia's plant production industries.
- 2 Voracious generalist feeder.
- 3 Over 300 known host plants.

It can be spread:

- 1 Acts as a hitchhiker on a range of cargo from planting materials to electrical goods.
- 2 Packaging, bins and pallets are a potential major means of spreading BMSB if it were to arrive and establish in Australia.

You can protect your farm by checking your property frequently for the presence of unusual pests. Take care when opening packages from overseas.

Field crates, bins and pallets could be preferred habitats for BMSB adults.



(a) Newly hatched BMSB nymphs and egg mass. (b) BMSB adult. Credit: (a) Gary Bernon, USDA APHIS, Bugwood.org. (b) Steven Valley, Oregon Department of Agriculture, Bugwood.org.

[Access the AUSVEG Pest and Disease Preparedness resource here](#)

Unsure whether you are correctly diagnosing a pest or disease?

Send in a sample to PIRSA-SARDI. This includes soil samples for nematodes. [Click here](#) for more information or call Zali Mahony on (03) 9882 0277.

Past Surveillance Updates

[CLICK HERE](#)



Remember: Pest and disease pressure varies from farm to farm. Always monitor your crops and consult your consultant/agronomist for advice on control.