

5

Preventing pests and diseases in the greenhouse

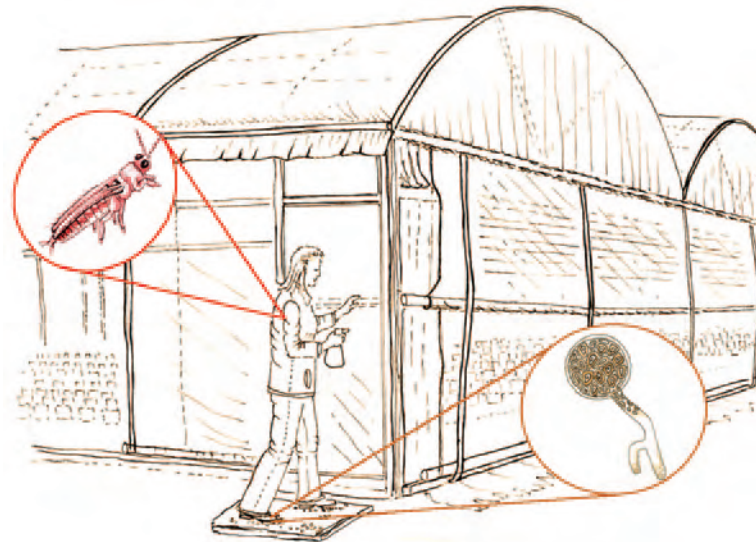
Do not go to another greenhouse

Movement of staff/workers and visitors onto and around the farm is one of the most common ways for pests and diseases to spread – pests and diseases will stick onto your clothes and shoes.

Employees should not go to another greenhouse unless they change clothes before coming to work.

If you visit another person's greenhouse, make sure you change clothes and shoes before going back into your own clean zone.

It is very easy to accidentally carry pests and especially diseases from one farm to another and from one greenhouse into another.



No one should visit another greenhouse before yours.

“Be clean and quarantine”

In the Sydney basin greenhouse production area, several growers recognised that diseases, in particular Bacterial canker and Fusarium, were turning up in their greenhouses soon after the disease occurred in other farms in the area.

They discussed how the disease could get to their farms and noted that it is common for growers to regularly visit nearby farms and meet for coffee to discuss the markets or production issues.

They also noted that some employees will work at more than one farm and other visitors, such as sales representatives, would travel to several farms in one day.

A couple of these growers stopped allowing people including themselves, if they had been to another farm, to go into their greenhouses until after they had changed their clothes, cleaned or changed their shoes and washed their hands.

The three growers who started doing this have already noticed that there is less disease in their crops compared with the growers who have not changed. Even when the disease does get in, it comes much later in the crop and so does not cause as many losses.

With this very simple rule, which costs almost nothing to do, these growers have saved whole crops from dying.

This **Preventing pests and diseases in the greenhouse** fact sheet is part of a series designed to show how simple low cost changes around the greenhouse can significantly reduce costs and losses from pests and diseases.

For more information please refer to the growers' guidelines “Keep it Clean” published by NSW Department of Primary Industries or go online: www.dpi.nsw.gov.au

The development of these materials was assisted by Horticulture Australia Ltd, through the national vegetable levy.

For more information: Jeremy Badgery-Parker