



**National Strategy
for the Management
of WFT and TSWV**

**Funding provided by:
Industry Contributions
&**



Identification of western flower thrips

**Western
Flower Thrips
on a sticky
trap (low
magnification)**





**National Strategy
for the Management
of WFT and TSWV**

**Funding provided by:
Industry Contributions
&**



Identification of western flower thrips



**Western flower thrips look a lot like
other thrips on a sticky trap - how do
I tell it apart from other thrips?**



**National Strategy
for the Management
of WFT and TSWV**

**Funding provided by:
Industry Contributions
&**



Identification of western flower thrips

**Females have light coloured
edge on abdomen**

**Banded
antennae**



**Hairs on
pronotum**

**General colour varies from pale
yellow to light brown**



**National Strategy
for the Management
of WFT and TSWV**

**Funding provided by:
Industry Contributions
&**



Identification of western flower thrips



**Hairs at the
top of the
pronotum**

**Hairs at the base of
the pronotum**

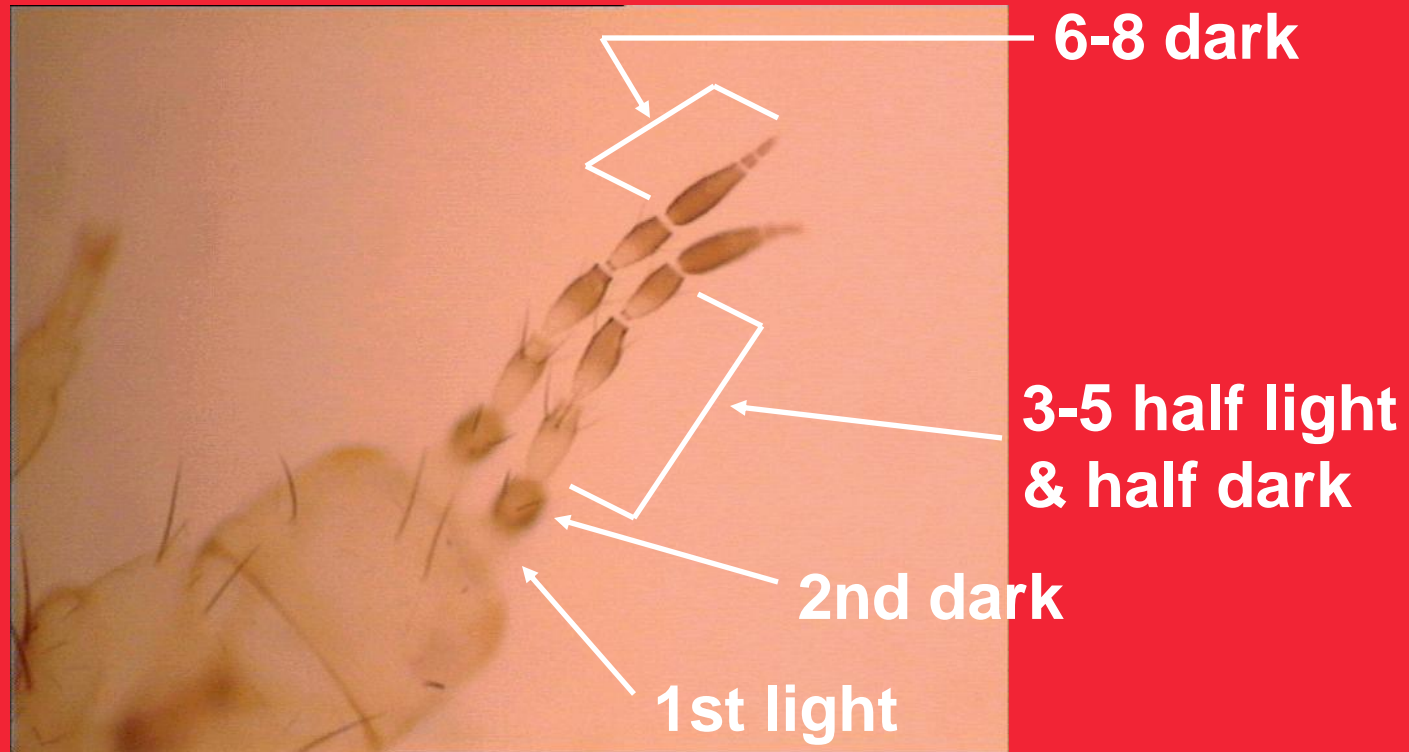


**National Strategy
for the Management
of WFT and TSWV**

**Funding provided by:
Industry Contributions
&**



Identification of western flower thrips



**WFT have 8 antennal segments which
have a characteristic banding pattern.**



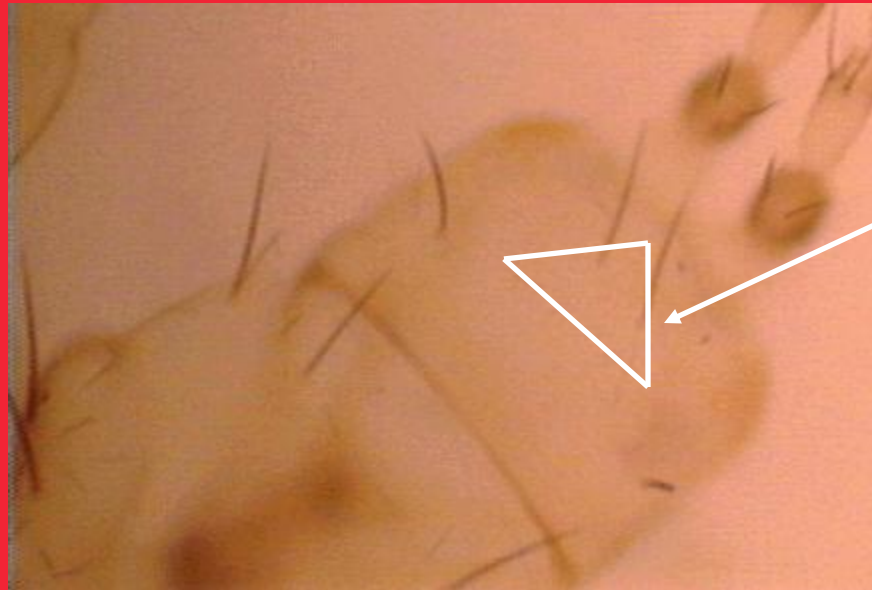
**National Strategy
for the Management
of WFT and TSWV**

**Funding provided by:
Industry Contributions
&**



Identification of western flower thrips

**To distinguish WFT from tomato
thrips look at the ocellar setae**



**Imagine a line
joining the
ocelli**

**In WFT the bases of the setae
fall on or near the lines**

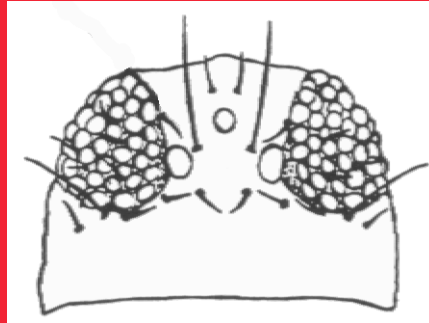


**National Strategy
for the Management
of WFT and TSWV**

**Funding provided by:
Industry Contributions
&**

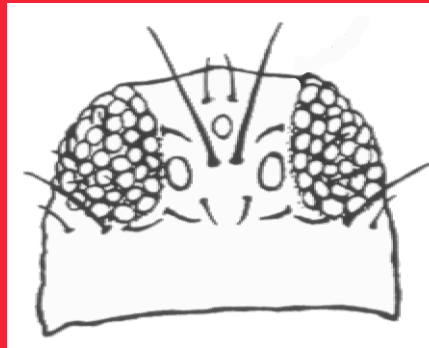


Identification of western flower thrips



WFT

Ocellar setae far apart



Tomato Thrips

**Ocellar setae close
together**



**National Strategy
for the Management
of WFT and TSWV**

**Funding provided by:
Industry Contributions
&**



Identification of western flower thrips

Tomato Thrips



Generally a dark colour all over



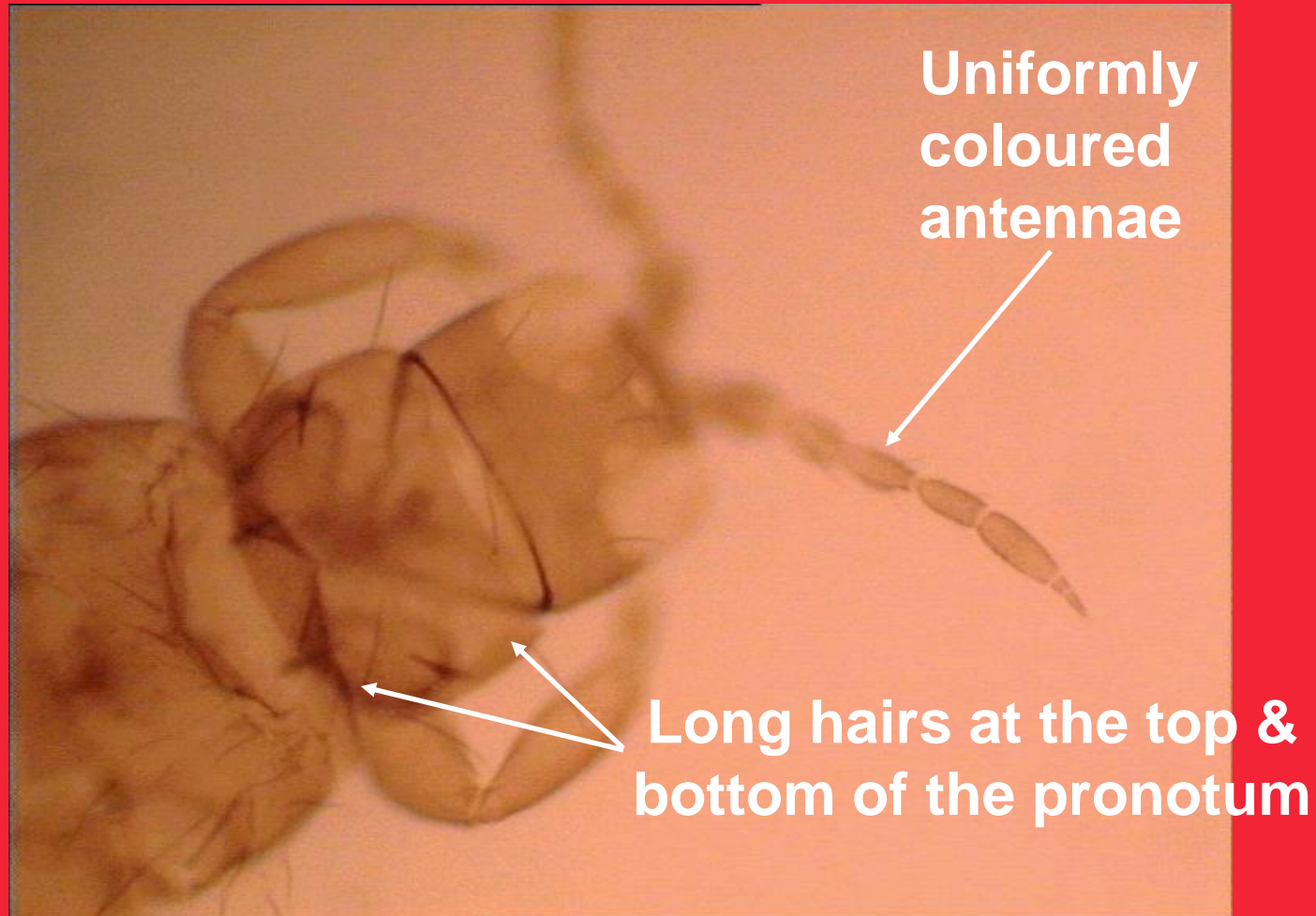
**National Strategy
for the Management
of WFT and TSWV**

**Funding provided by:
Industry Contributions
&**



Identification of western flower thrips

Tomato Thrips





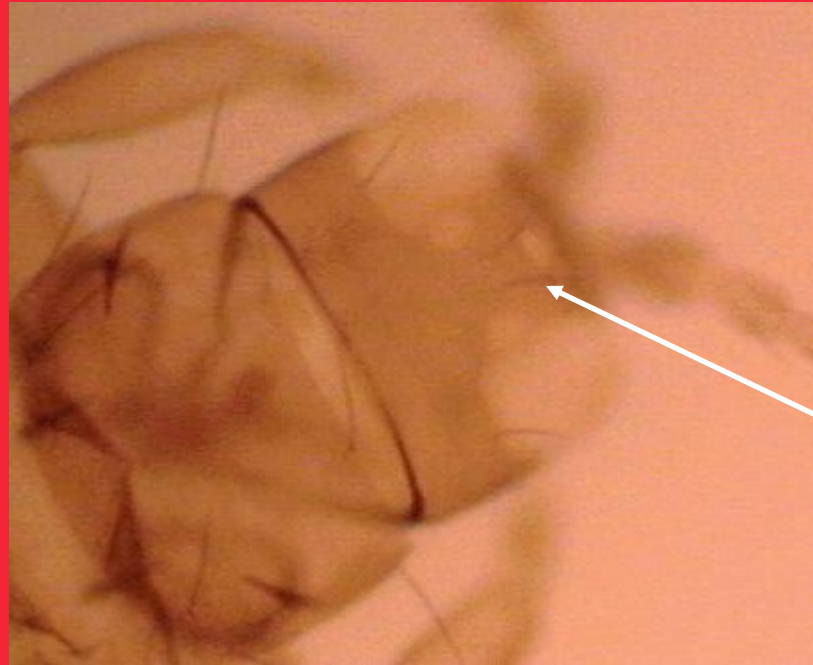
**National Strategy
for the Management
of WFT and TSWV**

**Funding provided by:
Industry Contributions
&**



Identification of western flower thrips

Tomato Thrips



**Ocellar setae
are close
together and
inside the
“triangle”**



**National Strategy
for the Management
of WFT and TSWV**

**Funding provided by:
Industry Contributions
&**



Identification of western flower thrips

Onion Thrips





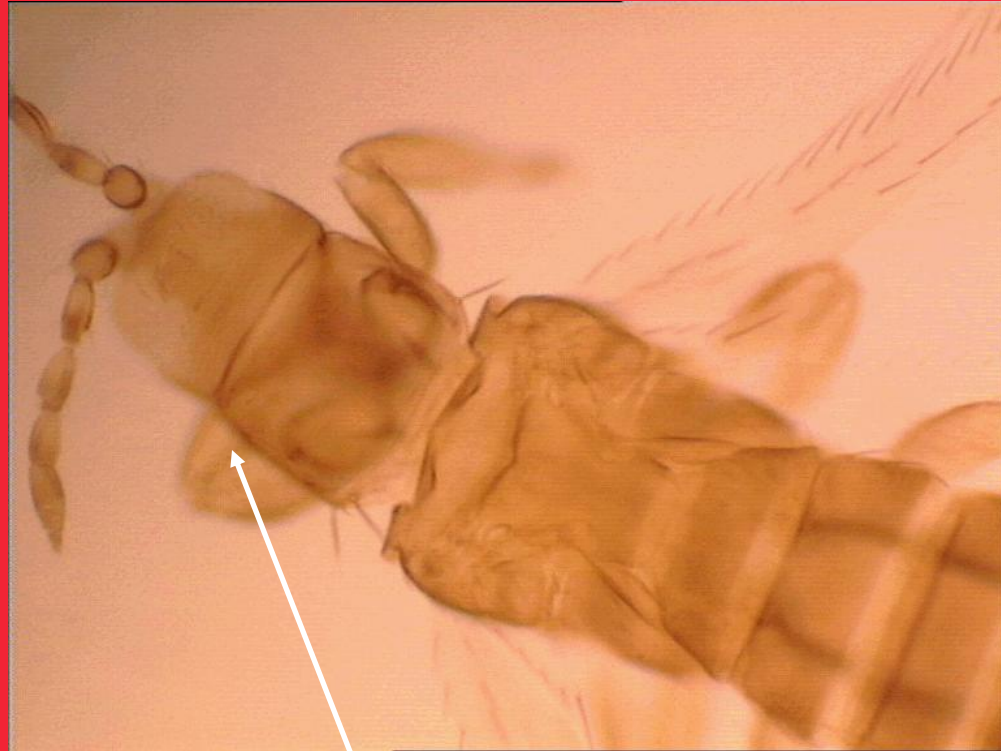
**National Strategy
for the Management
of WFT and TSWV**

**Funding provided by:
Industry Contributions
&**



Identification of western flower thrips

Onion Thrips



**No long hairs on the top of
the pronotum**



**National Strategy
for the Management
of WFT and TSWV**

**Funding provided by:
Industry Contributions
&**



Identification of western flower thrips

Plague Thrips



**Usually creamy
yellow in colour**

**Ocelli are
usually red**

**Native to
Australia**

**Often seen on
white washing on
clothes line**



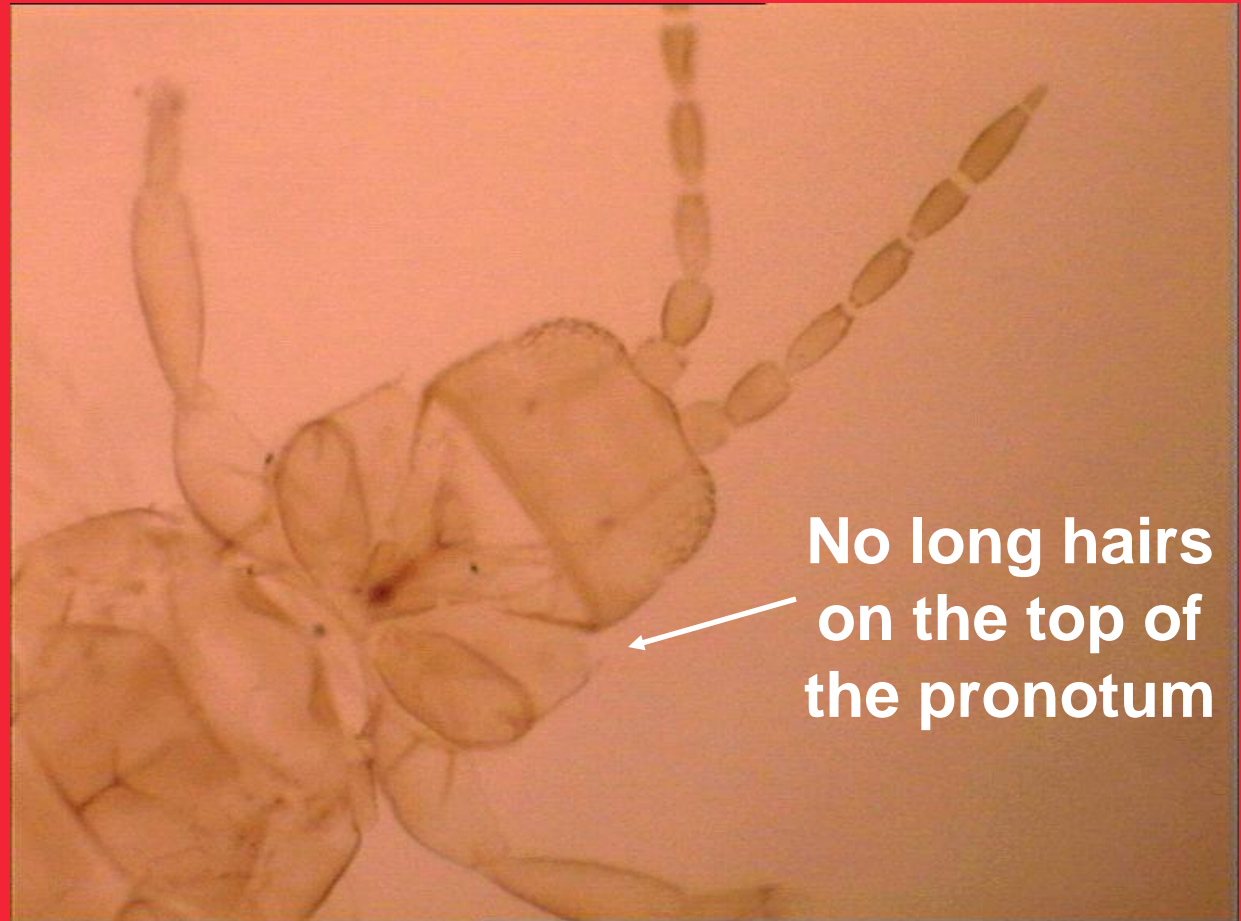
**National Strategy
for the Management
of WFT and TSWV**

**Funding provided by:
Industry Contributions
&**



Identification of western flower thrips

Plague Thrips



**No long hairs
on the top of
the pronotum**



**National Strategy
for the Management
of WFT and TSWV**

**Funding provided by:
Industry Contributions
&**



Identification of western flower thrips

Greenhouse Thrips



**Dark (almost black) body with
pale legs and antennae**

No long hairs on top of pronotum



**National Strategy
for the Management
of WFT and TSWV**

**Funding provided by:
Industry Contributions
&**



Identification of western flower thrips

Gladiolus Thrips



Black in colour

**No long hairs
on top of
pronotum**



**National Strategy
for the Management
of WFT and TSWV**

**Funding provided by:
Industry Contributions
&**



Identification of western flower thrips

In Summary

- WFT varies in colour from pale yellow to brown
- WFT has 2 pairs of hairs on the top edge of pronotum
- WFT has banded antennae
- WFT has ocellar hairs further apart than tomato thrips does
- WFT females have a light coloured edge to abdomen



**National Strategy
for the Management
of WFT and TSWV**

**Funding provided by:
Industry Contributions
&**



Identification of western flower thrips

In Summary

- Tomato thrips has 2 pairs of hairs on top edge of the pronotum
- Tomato thrips is a uniformly brown colour
- Tomato thrips has ocellar hairs close together
- Onion, plague, greenhouse and gladiolus thrips do NOT have 2 pairs of hairs on the pronotum



National Strategy for the Management of WFT and TSWV