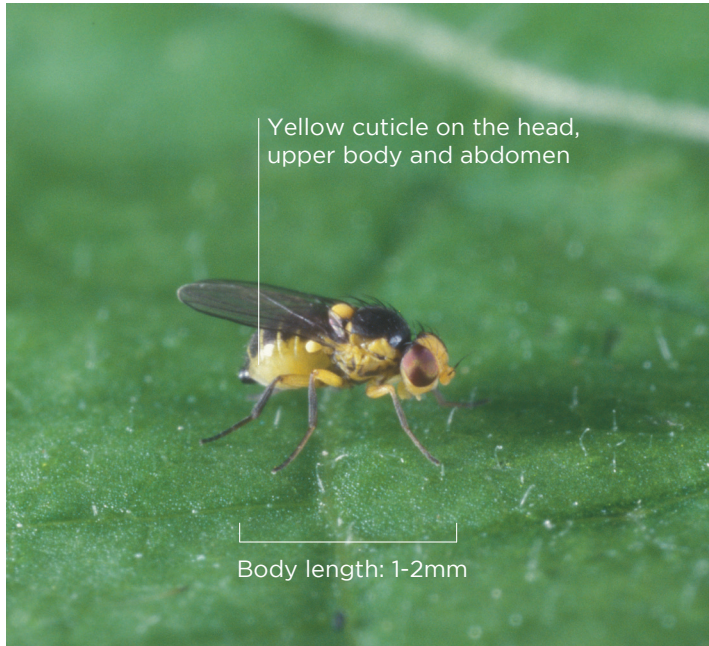


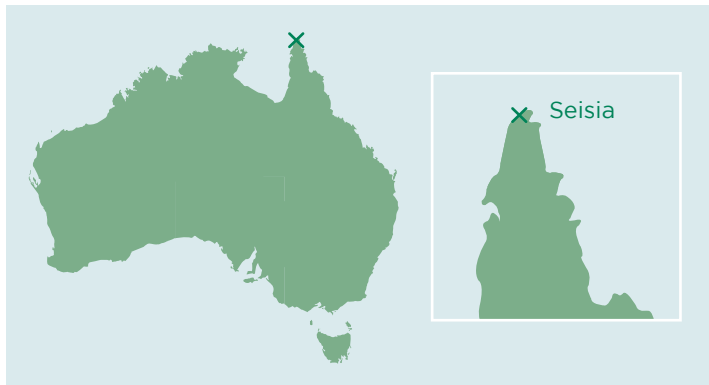
FACT SHEET

Vegetable leafminer



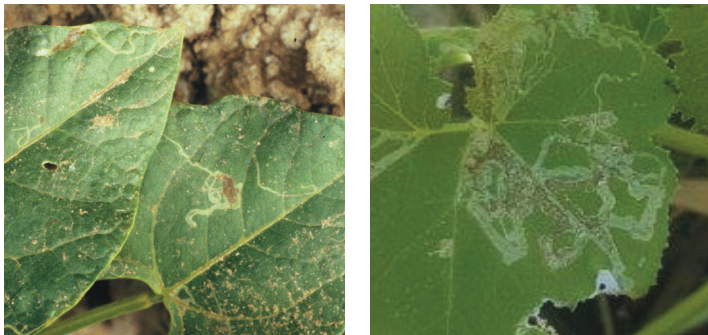
ADULT VEGETABLE LEAFMINER

Image courtesy of L. Buss, University of Florida.



VEGETABLE LEAFMINER LOCATION

The vegetable leafminer is currently found in the most northerly part of Queensland, on the Cape York Peninsula.



VEGETABLE LEAFMINER DAMAGE

Silvery, spiralling tracks or 'mines' on the leaf surface. Images courtesy of Whitney Cranshaw, Colorado State University, Bugwood.org (left) and Elia Pirtle, cesar (right).

The vegetable leafminer (VLM) is one of Australia's most unwanted pests.

It affects the majority of vegetable crops and can spread rapidly through movement of infested material, by flying, and by wind.

Help protect your garden, your home, the environment and our industries by keeping an eye out for the vegetable leafminer!

WHERE IS IT FOUND?

The pest is found in North America, Central America, South America, Africa, and Asia, and in 2008, it started moving down the Torres Strait Islands. In 2015, it was found in Seisia on Cape York Peninsula, the most northerly part of Queensland. There is a high risk that VLM will spread south to other parts of Australia, including our gardens.

WHAT DAMAGE DOES IT CAUSE?

The spiralling mines created by the vegetable leafminer become wider over time and reduce photosynthesis. This limits plant growth and may lead to plant death. Plants affected by VLM often can't be sold!

Visit the AUSVEG YouTube channel to watch an informative video on the vegetable leafminer: [youtube.com/AUSVEG](https://www.youtube.com/AUSVEG).

FUN FACT: Maggots tunnel inside the leaf and make visible tracks (called leaf mines) that get wider as they grow. It is often easier to identify a leafminer by the mines than it is by the fly itself.

If you suspect VLM in your garden, report it to the Exotic Plant Pest Hotline on 1800 084 881.

For more information on the Urban Biosecurity Program, contact Madeleine Quirk at AUSVEG on 03 9882 0277.