








Legend:
 Light green = Very low incidence
 Green = Low incidence
 Orange = Medium incidence
 Red = High incidence

Surveillance Update

Werribee, Victoria

26 August – 1 September 2021


Pest or disease					
Lettuce aphid	Green				
Alternaria		Light green	Light green	Light green	
Diamondback moth		* Green	* Green	* Green	
White blister		* Orange	* Green		
Sclerotinia		* Green	Green	* Green	
Cabbage aphid		* Green	* Green	Green	
Downy mildew		Green	Green		
Target spot					Green

Crops in order of appearance: Lettuce, Broccoli, Cauliflower, Cabbage, Tomato

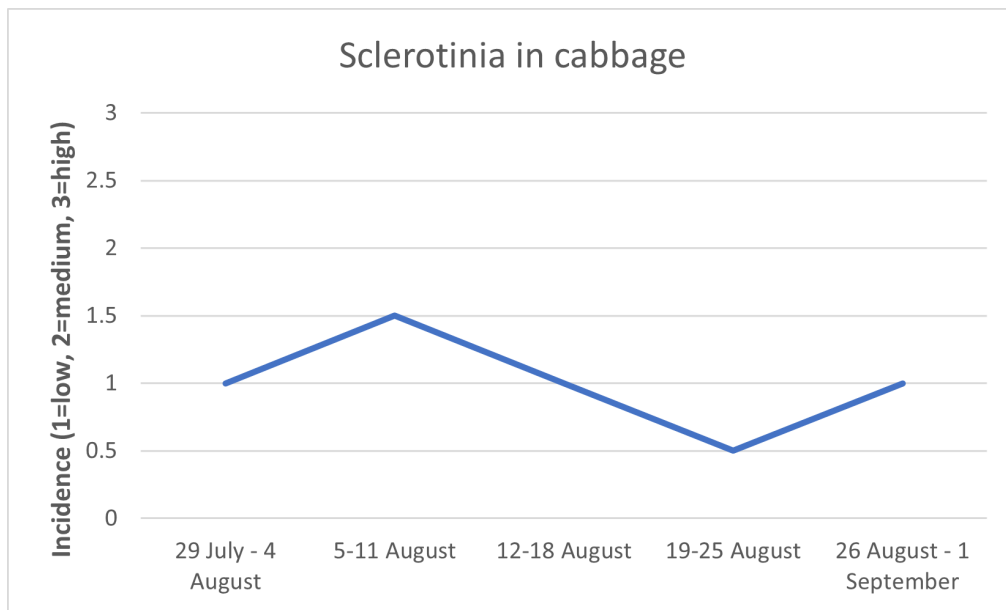
*Reported by multiple contributors.


What's in the crop?

White blister: White blister present in **low** to **moderate** levels in broccoli, and **low** in cauliflower. This has been a steady trend for the past two months.

Alternaria: Alternaria is reported to be present in **very low** levels in brassicas - broccoli, cauliflower, and cabbage. 

Sclerotinia: Relative downward trend for sclerotinia since 5 August: **low** to **moderate** in cabbage three weeks ago, **low** two weeks ago, **very low** last week, and **low** this week.



Lettuce aphid: Reports of lettuce aphid - being seen in low levels. 

Target spot: Early signs of target spot in tomato seedlings this week. Planting for indoor crops beginning this week.

Other:

- Free diagnostics are available through this project. Contact Maddy on 0437 004 174 or madeleine.quirk@ausveg.com.au to discuss.

