



**Stuart Grigg**  
Ag-Hort Consulting

# Surveillance Update

Werribee, Victoria

27 January – 2 February 2022



	Lettuce	Broccoli	Cauliflower	Cabbage	Fennel
Alternaria		Green	Green	Green	
Sclerotinia	Light green				
White blister		Orange*	Green*		
Aphids		Light green	Light green	Light green	
Cabbage white butterfly larvae		Orange	Orange	Orange	
Diamondback moth		Orange*	Orange*	Orange*	
Leafhopper	Yellow				Green
Rutherglen bug	Green				Green

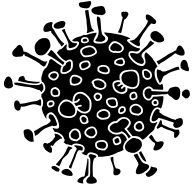
Crops in order of appearance: Lettuce, Broccoli, Cauliflower, Cabbage, Fennel  
\*Multiple contributors

## What's in the crop?



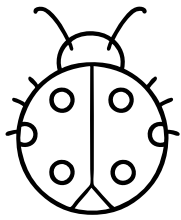
**Heliothis:** Eggs and grubs were not observed this week.

**Leafhoppers:** **low to moderate** in lettuce and **low** in fennel (down from **moderate** numbers in mid-January).



**Alternaria:** **Low** incidence in brassica crops this week.

**Sclerotinia:** **Very low** incidence in lettuce.



### Beneficials

- Spiders in low numbers

Excerpt from AUSVEG's Pest and Disease Preparedness Guide: **Brown marmorated stink bug** (*Halyomorpha halys*)  
Not present in Australia

**1** Significant threat to all of Australia's plant production industries.

**2** Voracious generalist feeder.

**3** Over 300 known host plants.

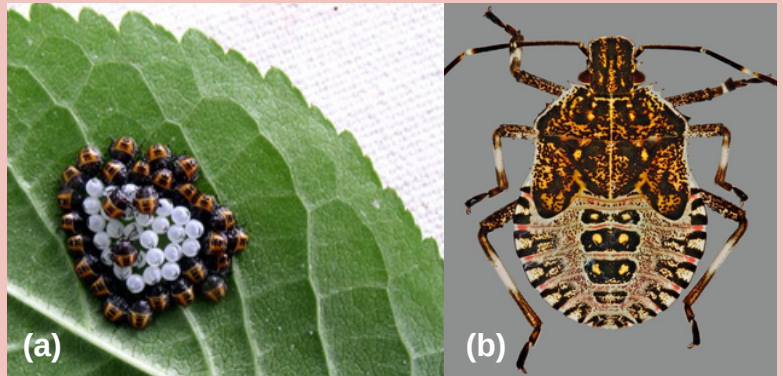
#### It can be spread:

**1** Acts as a hitchhiker on a range of cargo from planting materials to electrical goods.

**2** Packaging, bins and pallets are a potential major means of spreading BMSB if it were to arrive and establish in Australia.

You can protect your farm by checking your property frequently for the presence of unusual pests. Take care when opening packages from overseas.

Field crates, bins and pallets could be preferred habitats for BMSB adults.



(a) Newly hatched BMSB nymphs and egg mass. (b) BMSB adult. Credit: (a) Gary Bernon, USDA APHIS, Bugwood.org. (b) Steven Valley, Oregon Department of Agriculture, Bugwood.org.

### Unsure whether you are correctly diagnosing a pest or disease?

Send in a sample to Agriculture Victoria's Crop Health Services (CHS).  
Contact CHS on 03 9032 7323 or Maddy Quirk on 0437 004 174.

### Past Surveillance Updates

[CLICK HERE](#)



**Remember:** Pest and disease pressure varies from farm to farm. Always monitor your crops and consult your consultant/agronomist for advice on control.