

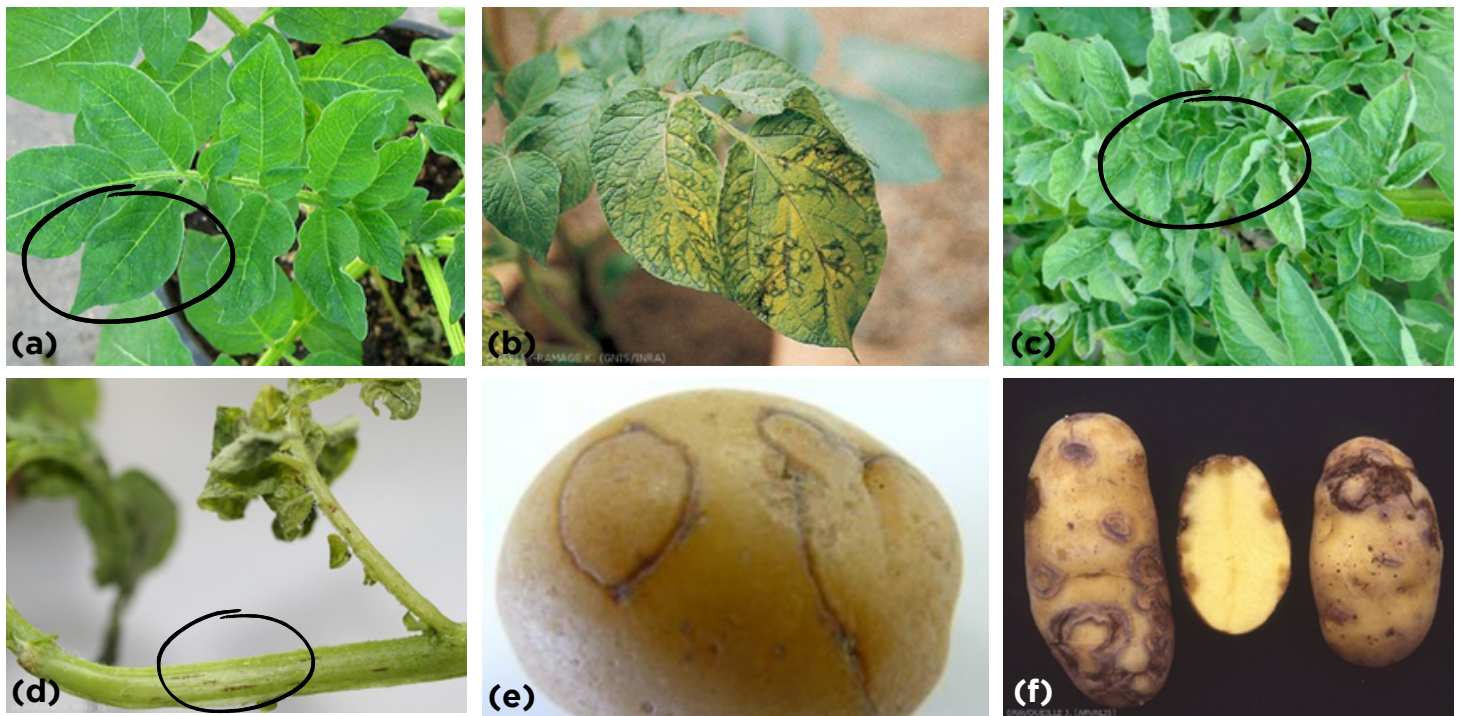
# FACT SHEET

## Potato Virus Y (PVY, PVY-NTN)

Potato virus Y (PVY) infects many Solanaceous plants including potato, tomato, pepper, eggplant and weeds such as *Solanum nigrum* (nightshade). The virus has many strains and variants including PVY-NTN, also referred to as Potato Tuber Necrotic Ringspot Disease.

### What to look for

Symptoms vary depending on the PVY strain and on the variety of potato. To confirm if you have PVY or PVY-NTN in your crop send samples to a diagnostic laboratory.



Symptoms on potato leaves may include mild or severe mottling (a), mosaic patterns, yellow, green or brown and necrotic spots or rings (b) and deformation (c). Necrotic streaks may develop on potato stems (d). On affected tubers, brown blisters in the shape of arcs, rings or lines may be seen (e). When cut open, brown discoloration may be visible under the skin of severely affected tubers (f); Credit: Walter De Jong, Cornell University, [agric.wa.gov.au](http://agric.wa.gov.au) and <http://ephytia.inra.fr/en>.

IF YOU SEE ANYTHING UNUSUAL,  
CALL THE EXOTIC PLANT PEST HOTLINE



1800 084 881



# FACT SHEET






## Potato Virus Y (PVY, PVY-NTN)

### Understanding spread to manage the virus



PVY is spread across seasons through infected potato seed tubers. Spread of PVY may also be mediated by aphids (top left), leaf to leaf contact between infected plants, and through use of contaminated tools, machinery and clothing. Using only certified seed, ensuring machinery, equipment and clothing are clean before moving between crops are crucial. Monitoring for and controlling aphids can also help reduce the risk of spread. Credit: agric.wa.gov.au; AusVeg.

### Risk assessment - how prepared is your farm?

| Means of spread   | Best practice options   | Is this available on your farm? |
|---|---|---------------------------------|
|  Planting material                      | Use certified clean/healthy planting material<br>Remove volunteers and weeds  | <input type="checkbox"/>        |
|  Aphids                                 | Monitor and control for aphids  | <input type="checkbox"/>        |
|  Direct contact between infected plants | Remove, destroy and dispose of infected plant material  | <input type="checkbox"/>        |
|  Vehicles and equipment                 | Practice 'come clean, go clean'<br>Have one main entry point to the property<br>Designate parking areas and paths<br>Decontaminate tools and machinery upon entry and exit                            | <input type="checkbox"/>        |
|  People (Staff and farm visitors)       | Practice 'come clean, go clean'<br>Install biosecurity signs<br>Know who is coming onto your farm<br>Clean shoes and clothes - use footbaths with disinfectant<br>Train staff in protecting your farm | <input type="checkbox"/>        |

#### Fact:

PVY has been shown to survive for up to 24 hours on tyres & metal surfaces. Decontaminating tools and machinery is a simple way to stop the virus from being spread in your crop.

#### Want to know more?



- Biosecurity Tasmania
- Ephytia
- Cornell University PTY
- Transmission and infection

**IF YOU SEE ANYTHING UNUSUAL,  
CALL THE EXOTIC PLANT PEST HOTLINE**



**1800 084 881**

